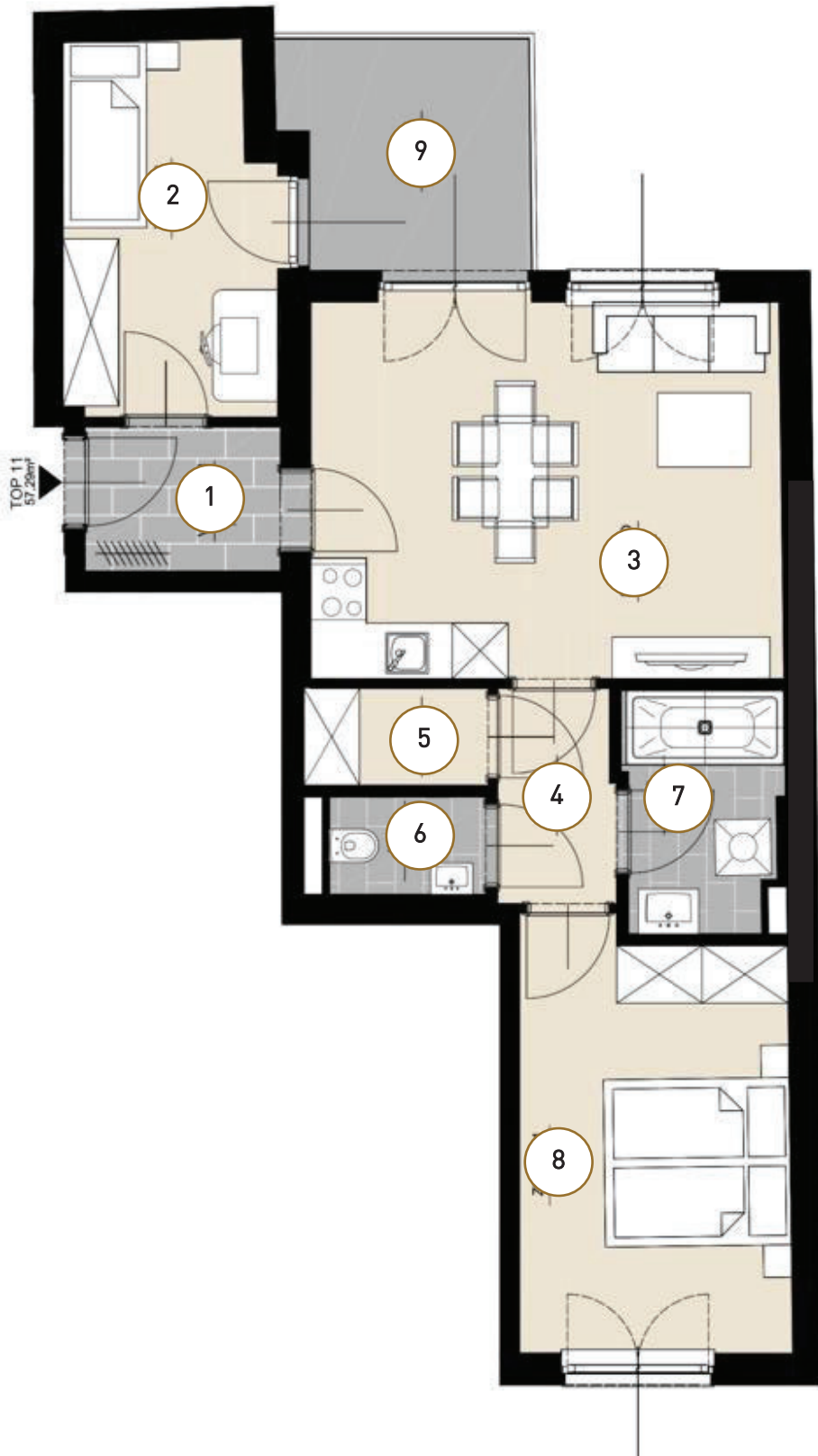


# GRUNDRISS



- ① VORRAUM ca. 3,29m<sup>2</sup>
  - ② ZIMMER 1 ca. 9,03m<sup>2</sup>
  - ③ ES/KO/WO ca. 20,78m<sup>2</sup>
  - ④ FLUR ca. 2,91m<sup>2</sup>
  - ⑤ ABSTELLR. ca. 2,08 m<sup>2</sup>
  - ⑥ WC ca. 1,77m<sup>2</sup>
  - ⑦ BAD ca. 4,26m<sup>2</sup>
  - ⑧ ZIMMER 2 ca. 13,17m<sup>2</sup>
  - ⑨ BALKON ca. 6,50m<sup>2</sup>
- Nutzfl. gew. ca. 60,49m<sup>2</sup>**

